

enzyme plasmin.

Web

Images

Videos

News

Shopping ^{BETA}

All regions

Choose search region

Search region

All regions

Argentina

Australia

Austria

Belarus

Belgium (FR)

Belgium

Brazil

Bulgaria

Canada (EN)

Canada (FR)

Chile

China

Colombia

Czech Republic

Denmark

Egypt

Estonia

Finland

France

Germany

Greece

Hong Kong

Hungary

India (EN)

India (HI)

Indonesia (EN)

Indonesia (ID)

Ireland

Italy

Japan

Korea

Malaysia (EN)

Malaysia (M)

Mexico

Netherlands

New Zealand

Norway

Peru

Philippines (EN)

Philippines (FIL)

Poland

Portugal

Romania

Russia

Singapore (EN)

Singapore (MS)

South Africa

Spain (CA)

Spain (ES)

Sweden

Switzerland

Switzerland (FR)

Switzerland (IT)

Taiwan

Turkey

Ukraine

United Kingdom

Uruguay

US (EN)

US (ES)

Venezuela

Vietnam (EN)

Vietnam (VI)

Safe Search: On

Filter explicit content

On

Off

Any time

Choose time period

Any time

Past 24 hours

Past week

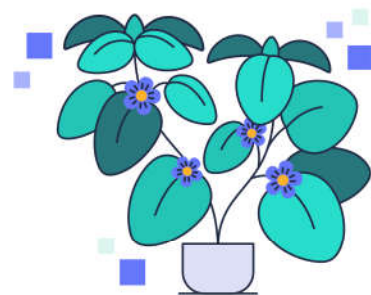
Past month

Past year

Supporting Startpage is easy

Our ads are always private and never loud or disruptive. Help Startpage grow by exempting us from your ad blocker!

[Learn more](#)



[Feedback](#)

Web results

[Anonymous View](#)

<https://en.wikipedia.org/wiki/Plasmin>

[Plasmin - Wikipedia](#)

Plasmin is an important **enzyme** (EC 3.4.21.7) present in blood that degrades many blood plasma **proteins**, including **fibrin** clots. The degradation of **fibrin** is ...

[Anonymous View](#)

[Anonymous View](#)

<https://www.sciencedirect.com/topics/immunology-and-microbiology/plasmin>

[Plasmin - an overview | ScienceDirect Topics](#)

Plasmin is a serine **protease** that cleaves cross-linked **fibrin** to produce **fibrin** degradation products which are easily swept away and degraded in flowing blood.

[Anonymous View](#)

[Anonymous View](#)

<https://www.ncbi.nlm.nih.gov/books/NBK539745/>

[Physiology, Plasminogen Activation - StatPearls - NCBI Bookshelf](#)

Sep 26, 2022 ... **Plasminogen** activation results in increased conversion of **plasminogen** to **plasmin**, the latter an **enzyme** that breakdowns the fibrinogen in ...

[Anonymous View](#)

[Anonymous View](#)

<https://www.ncbi.nlm.nih.gov/books/NBK507917/>

[Tissue Plasminogen Activator - StatPearls - NCBI Bookshelf](#)

... **plasminogen** to **plasmin**, the primary **enzyme** involved in dissolving blood clots. Examples of these drugs include alteplase, reteplase, and tenecteplase ...

[Anonymous View](#)

[Anonymous View](#)

<https://enzymeresearch.com/product/human-plasmin/>

[Human Plasmin - Enzyme Research Laboratories](#)

Human **Plasmin** ... Prepared from Glu-**Plasminogen** using urokinase, coupled resin. Purity is justified by SDS-PAGE. **Plasmin** is a two-chain serine **protease** linked by 2 ...

Abc

Our

Priv

Pres

Sup

Sett

Ima

Imp

Priv

Blog

Hov

Lea

Feedback

[Anonymous View](#)

[Anonymous View](#)

<https://www.britannica.com/science/plasmin>

[Plasmin | biology | Britannica](#)

Dec 24, 2023 ... **Plasmin** is a proteolytic **enzyme**—a substance that causes breakdown of **proteins**—derived from an inert plasma precursor known as **plasminogen**.

[Anonymous View](#)

[Anonymous View](#)

<https://www.ahajournals.org/doi/10.1161/CIRCRESAHA.120.317245>

[Identification and Characterization of Plasmin-Independent ...](#)

Dec 9, 2020 ... **Plasmin** is the key **enzyme** in the fibrinolytic cascade dissolving blood clots. **Plasmin** functions as a nonspecific **protease** that trigger ...

[Anonymous View](#)

[Anonymous View](#)

<https://www.cellsciences.com/native-bovine-plasmin-active>

[Native Bovine Plasmin Active - Cell Sciences](#)

Plasmin, like Trypsin, belongs to the family of serine proteases **Fibrin** is a cofactor for **Plasmin** activation by tPA. Urokinase **Plasminogen** Activator ...

[Anonymous View](#)

[Anonymous View](#)

<https://www.athensresearch.com/products/coagulation-factors/plasmin-human-plasma>

[Plasmin, Human Plasma, Lyophilized](#)

Comparative medicine 63, no. 3 (2013): 244-251. OUR PRODUCTS & INFO. Coagulation Factors & **Enzymes & Inhibitors** ...

[Anonymous View](#)

[Anonymous View](#)

<https://ashpublications.org/blood/article/137/21/2881/475578/Plasminogen-an-enigmatic-zymogen>

[Plasminogen: an enigmatic zymogen | Blood - ASH Publications](#)

May 27, 2021 ... **Plasminogen** is an abundant plasma **protein** that exists in various zymogenic forms. **Plasmin**, the proteolytically active form of **plasminogen**, ...

[Anonymous View](#)

Abc

Our

Priv

Pres

Sup

Sett

Ima

Imp

Priv

Blog

Hov

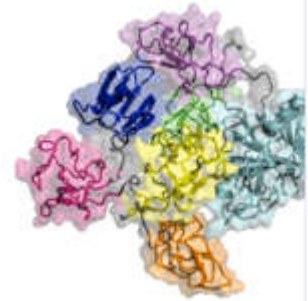
Lea

Feedback

[1](#)[2](#)[3](#)[4](#)[5](#)[Next](#)[Abc](#)[Our](#)[Priv](#)[Pres](#)[Sup](#)[Sett](#)[Ima](#)[Imp](#)[Priv](#)[Blog](#)[Hov](#)[Lea](#)

Plasmin

Enzyme in human blood that degrades clots and other proteins



Plasmin is an important enzyme (EC 3.4.21.7) present in blood that degrades many blood plasma proteins, including fibrin clots. The degradation of fibrin is termed fibrinolysis. In humans, the plasmin protein (in the zymogen form of **plasminogen**) is encoded by the *PLG* gene.



[Wikipedia](#)

Available structures

PDB

Ortholog search: [PDB](#) [RCSB](#)

Identifiers

Aliases

[PLG](#), plasminogen, plasmin, HAE4

External IDs

[OMIM: 173350](#) [MGI: 97620](#) [HomoloGene: 55452](#) [GeneCards: PLG](#)

[Wikidata](#)

More from Wikipedia

Wikipedia text under CC-BY-SA license

[Learn more about how to be private online. Visit our privacy blog](#)

- [Privacy Policy](#)
- [About Us](#)
- [Press](#)

[Learn more about how to be private online. Visit our privacy blog](#)

Abc

Our

Priv

Pres

Sup

Sett

Ima

Imp

Priv

Blog

Hov

Lea

[Feedback](#)